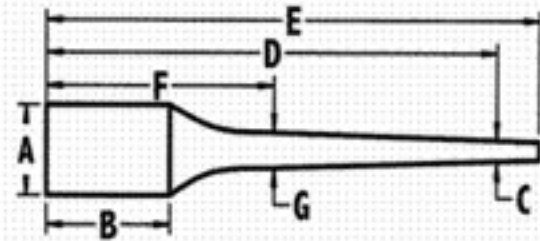


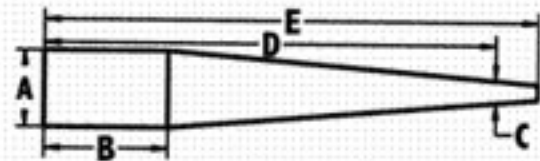
# Krieger Barrel & Barrel Blank Contour Chart

## Sporter Barrel Contours<sup>1</sup>



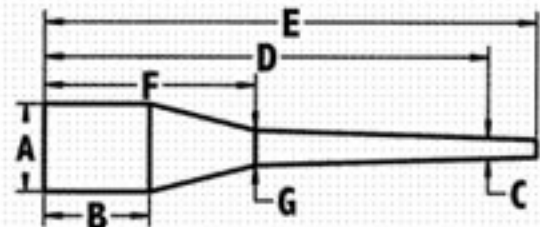
	A	B	C	D	E	F	G	Est. Weight
#0 Featherweight	1.250	1.250	.560	22	27	6	.760	2.0#
#1 Light Sporter	1.250	2.250	.560	24	27	6	.760	2.5#
#2 Standard Sporter	1.250	2.750	.600	24	27	6	.800	2.8#
#3 Medium Sporter	1.250	2.750	.630	24	27	6	.830	3.0#
#4 Heavy Sporter	1.250	2.750	.670	26	27	6	.870	3.5#
#5 Bull Sporter	1.250	2.750	.700	26	27	6	.900	4.0#
#6 Heavy Bull Sporter	1.250	2.750	.750	26	27	6	1.000	4.5#

## Varmint and Match Contours<sup>1</sup>



	A	B	C	D	E	Est. Weight
#7 Light Target	1.200	2.750	.750	26	27	5.5#
#8 Standard Target	1.200	2.750	.820	26	27	6.0#
#9 Heavy Target	1.250	2.750	.875	26	27	6.5#
#10 MTU	1.250	2.750	.930	26	27	7.0#
#11 Straight Blank	CM 1.300/SS 1.250	--	CM 1.300/SS 1.250	28	29	10.0#
#12 SS Oversize OD	1.450	--	1.450	28	29	13.0#
#12 CM Oversize OD	2.000	--	2.000	28	29	23.0#
#13 50BMG	2.000	--	2.000	36	38	32.0#
#17 Heavy Varmint	1.250	5.000	.900	28	29	7.0#
#18 Light Varmint	1.200	5.000	.875	28	29	6.5#
#19 Hunter	1.250	4.000	.750	26	27	6.0#

## Palma Contours<sup>2</sup>



	A	B	C	D	E	F	G	Est. Weight
#14 Heavy Palma	1.250	2.500	.900	30	31	5	1.000	6.5#
#15 Standard Palma	1.250	2.500	.820	30	31	5	0.920	5.5#
#16 Light Palma	1.250	2.500	.750	30	31	5	0.900	4.5#