



10'x20' Storage Shed Plan

Compare our Free vs. Premium plan

This perfectly designed plan will guide you through the entire process of building your very own shed for any backyard or garden.



Check out the benefits you would get with our **premium edition**:

Features	Free plan	Premium edition
Steps count	10	20
Illustrations for Each Step	✓	✓
Print Ready	✓	✓
Step By Step Instructions	✓	✓
Full Materials and Cuttings List	✗	✓
Additional Illustrations	✗	✓
Additional Blueprints	✗	✓
Tools List	✗	✓
Fastening Elements List	✗	✓
Technical Support	✗	✓

BUY NOW

10'x20' Storage Shed Plan Material List

Site Preparation

- Concrete
- Bricks

Bottom Frame

- Pressure-Treated Lumber
- Plywood

Wall Frames

- Pressure-Treated Lumber

Shed's Roof

- Pressure-Treated Lumber
- Pressure-Treated Board
- Plywood
- Building paper
- Asphalt shingles
- Metal drip edge

Shed's Door

- Pressure-Treated Lumber
- Wood siding boards
- Plywood

Walls Exterior Siding

- Pressure-Treated Lumber
- Wood siding boards

Top Frame

- Pressure-Treated Lumber

Fasteners & Hardware

- Door hinges
- Door pulls
- Surface bolt
- Galvanized nails
- Wood screws

STEP 1

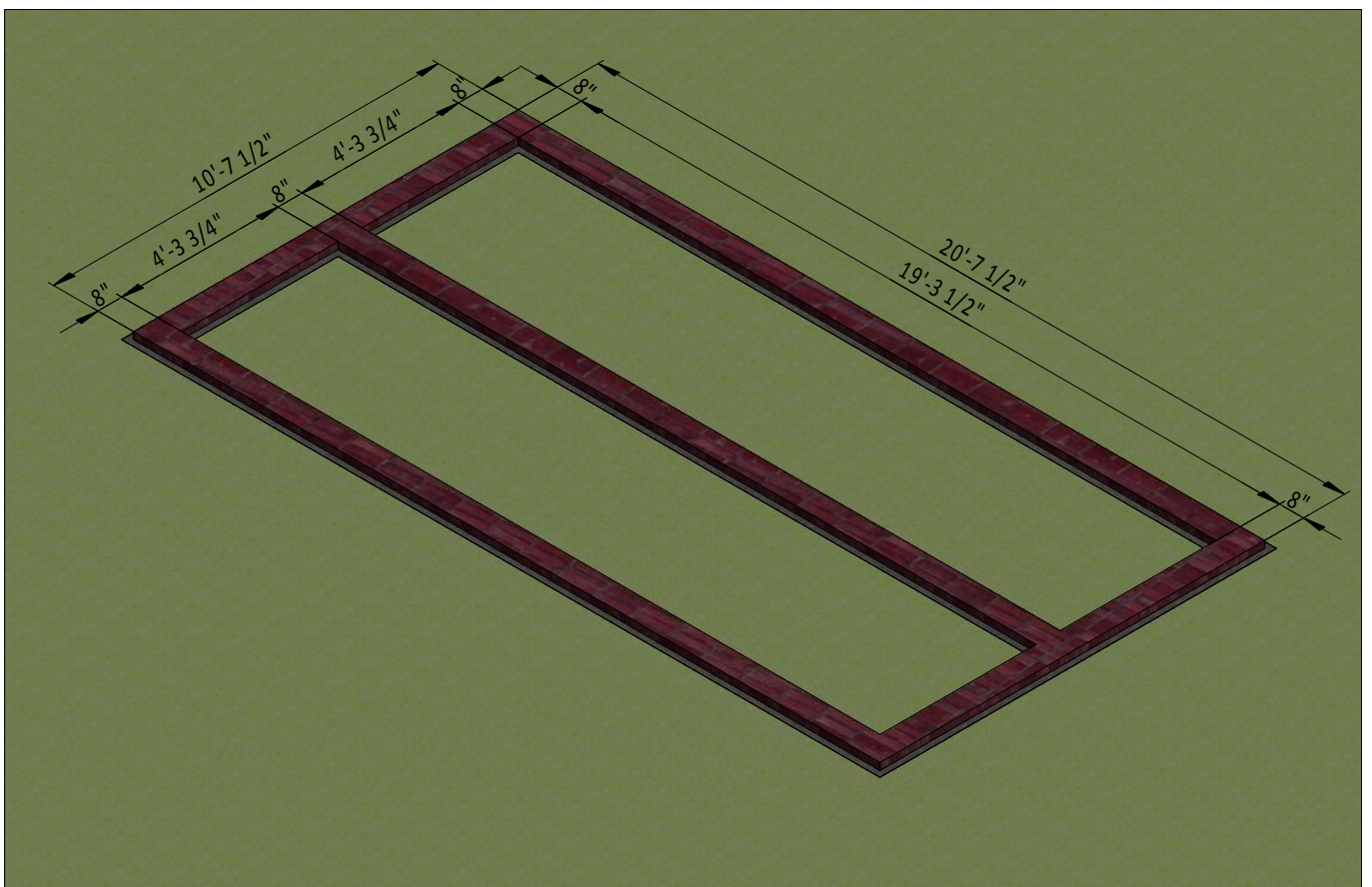
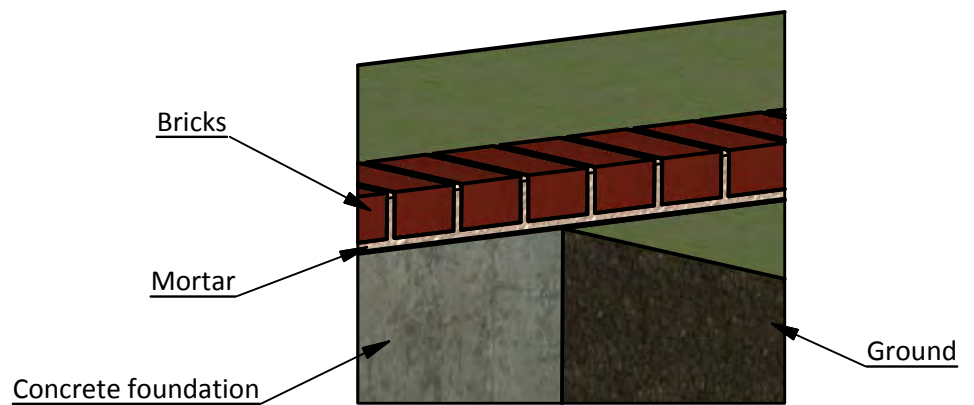
Foundation Preparation

1.1 Clear the area where you want to build the shed and layout for the foundation. Use the below illustration as a guide.

1.2 For the foundation, dig the trenches at least 1' wide and 1' deep.

1.3 Fill the trenches to ground level with concrete and let cure, or harden. Since curing times vary between brands, read the packaging for recommended curing times.

1.4 Once the concrete has cured, use standard-sized bricks and lay them across the foundation. You will need roughly 250 bricks for this step.



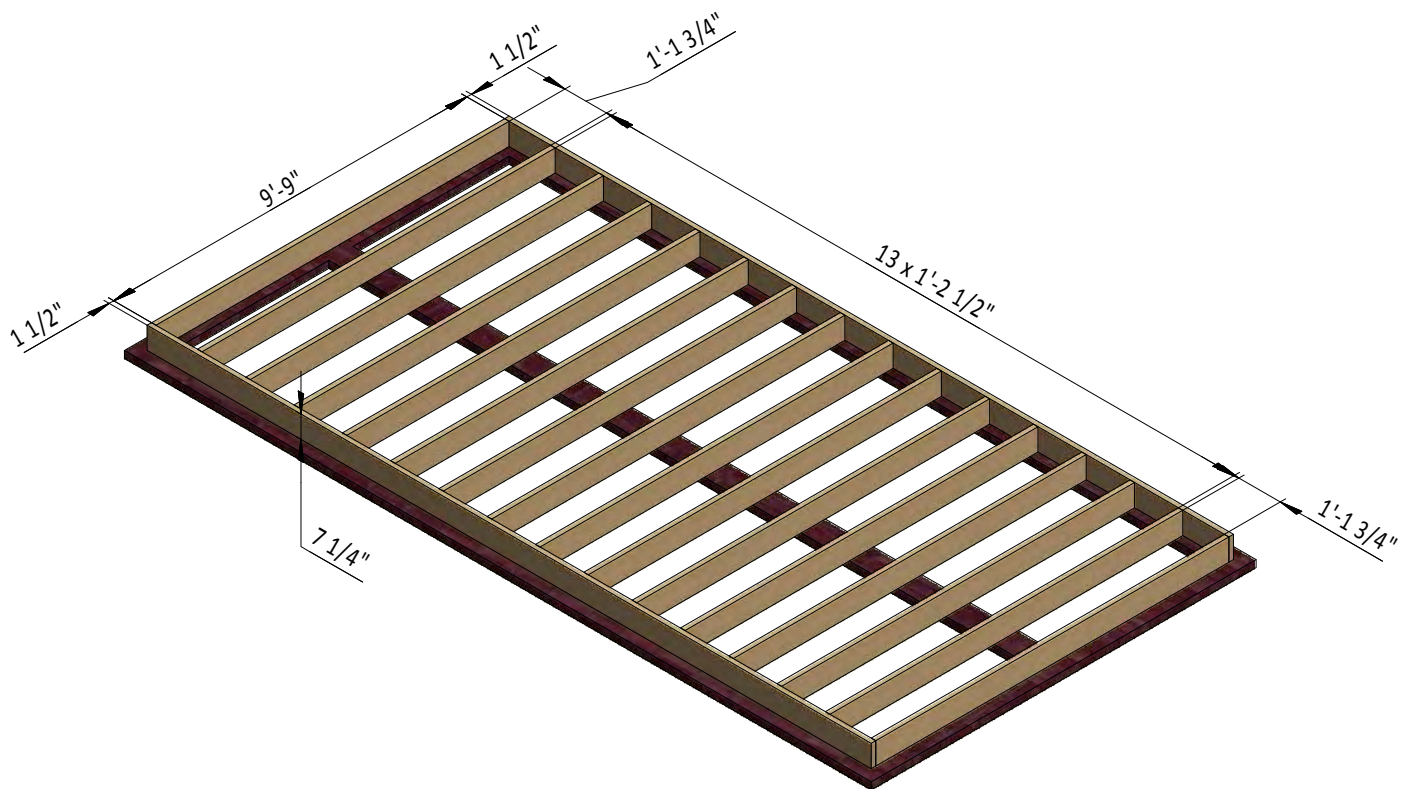
STEP 2

Framing the Floor

2.1 Assemble the frame using 1 1/2" x 7 1/4" treated lumber. You will need 14 boards cut to 9'-9" to use as floor joist.

2.2 Secure the beams together with 8x5" wood screws.

2.3 Take a few minutes to check the corners to make sure they are 90°.



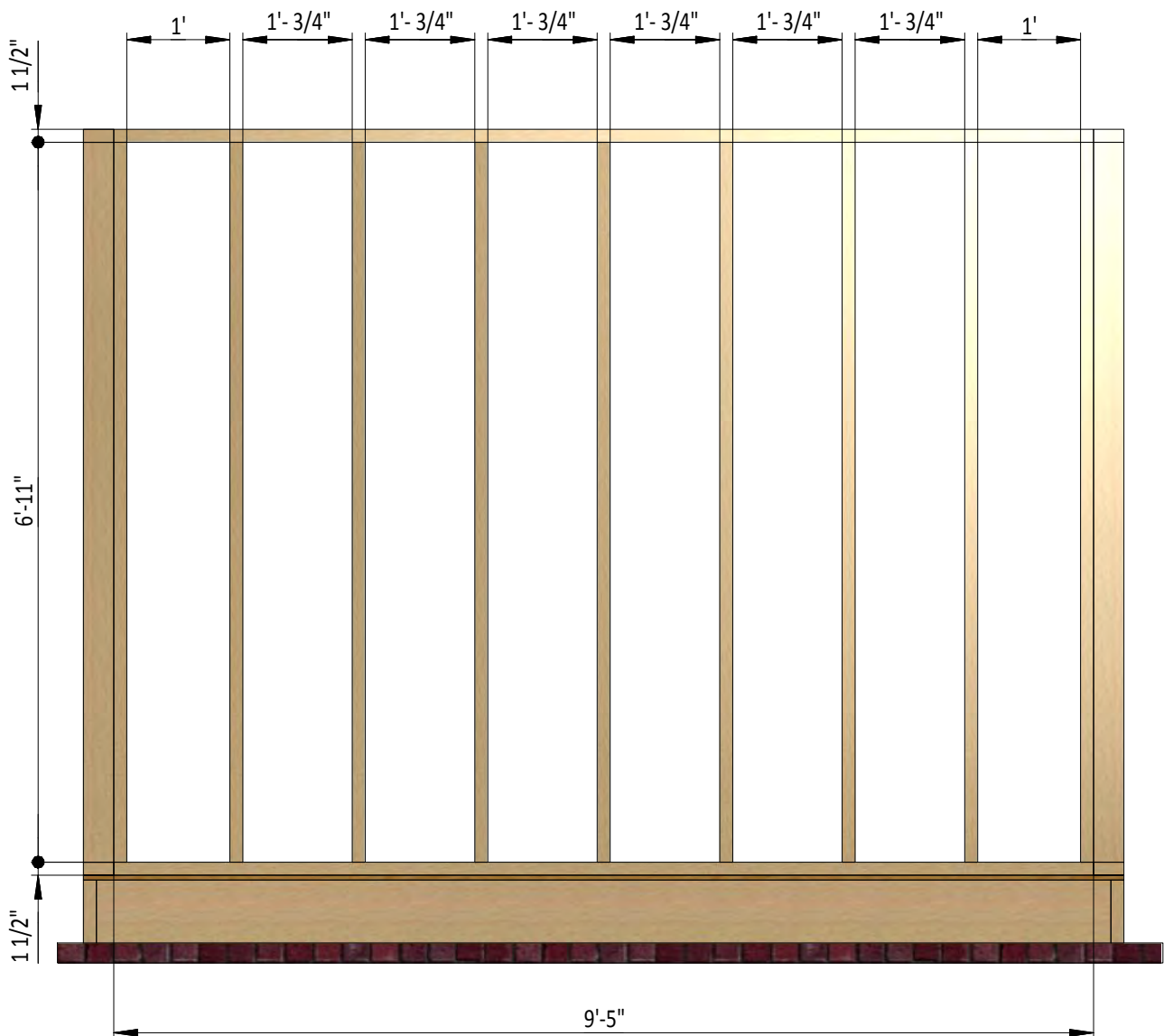
STEP 5

Assemble Left and Right Wall Frames

5.1 Using 1 1/2" x 3 1/2" treated lumber, construct the side wall frames using the drawing below as a guide. You will need nine boards cut to 6'-11" for the wall studs and two boards cut to 9'-5" for the top and bottom plates for the garden shed.

5.2 Join all the beams with 2x4" flat head Phillips wood screws.

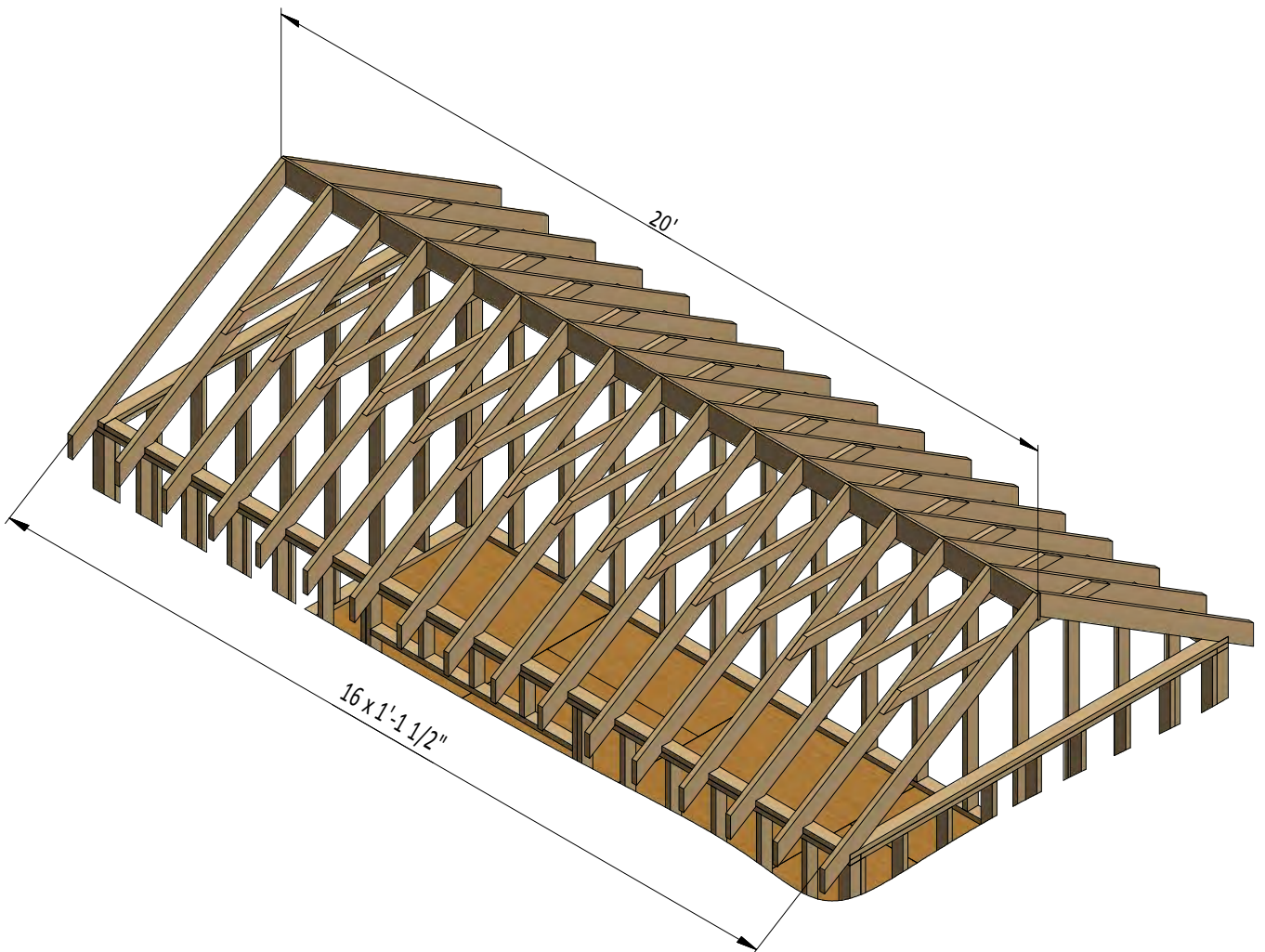
5.3 Check the corners as you go and when you complete the walls to make sure they are 90°.



STEP 6

Assemble the Roof Frame

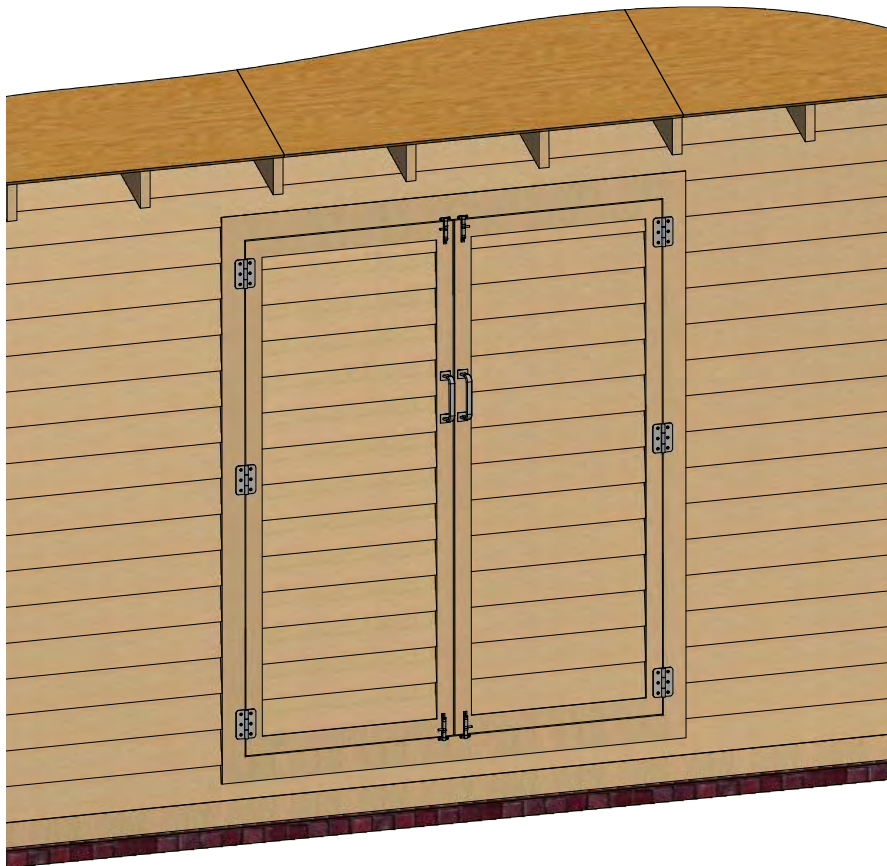
- 6.1** Using 1 1/2 " x 5 1/2 " pressure-treated lumber, cut 34 rafters 6'-11" long according to the angle dimensions.
- 6.2** Using 1 1/2 " x 3 1/2 " treated lumber, cut fifteen collar ties 5'-11 3/4" long according to the dimensions.
- 6.3** Using 3/4 " x 7 1/4 " pressure-treated board, cut the ridge board 20' long according the illustration below.
- 6.4** Use 2x3" flat head Phillips wood screws to connect the beams.



STEP 7

Assemble and Install Shed Doors

- 7.1** Build the door frames for the shed using 1 1/2 " x 3 1/2 " treated lumber and secure with 5" Phillips flat head wood screws. You will need two boards cut to 5'-11 3/4" for the vertical girts and two boards cut to 2'-3/4" for the horizontal girts.
- 7.2** Cut the 9/16" plywood sheet with dimensions into two pieces 2'-7 3/4" x 5'-11 3/4" for the doors.
- 7.3** Use 2 1/2 " x 3/4 " treated lumber for the door trim and fasten with 2" Phillips flat head wood screws. You will need two boards cut to 2'-2 3/4" and two boards cut to 5'-11 3/4" to make the trim.
- 7.4** Use 1/4 " x 3/4 " pressure-treated lumber to cut and install a starter course 2'-2 3/4" long.
- 7.5** For the exterior siding on the door, use 1/2 " x 6" wood siding board as show in the image below.
- 7.6** Assemble siding shields with 2" galvanized nails.
- 7.7** Install three 3" door hinges using 6x1" Phillips flat head wood screws. Finish the door installation by attaching 4" surface bolts and 6" door pulls.

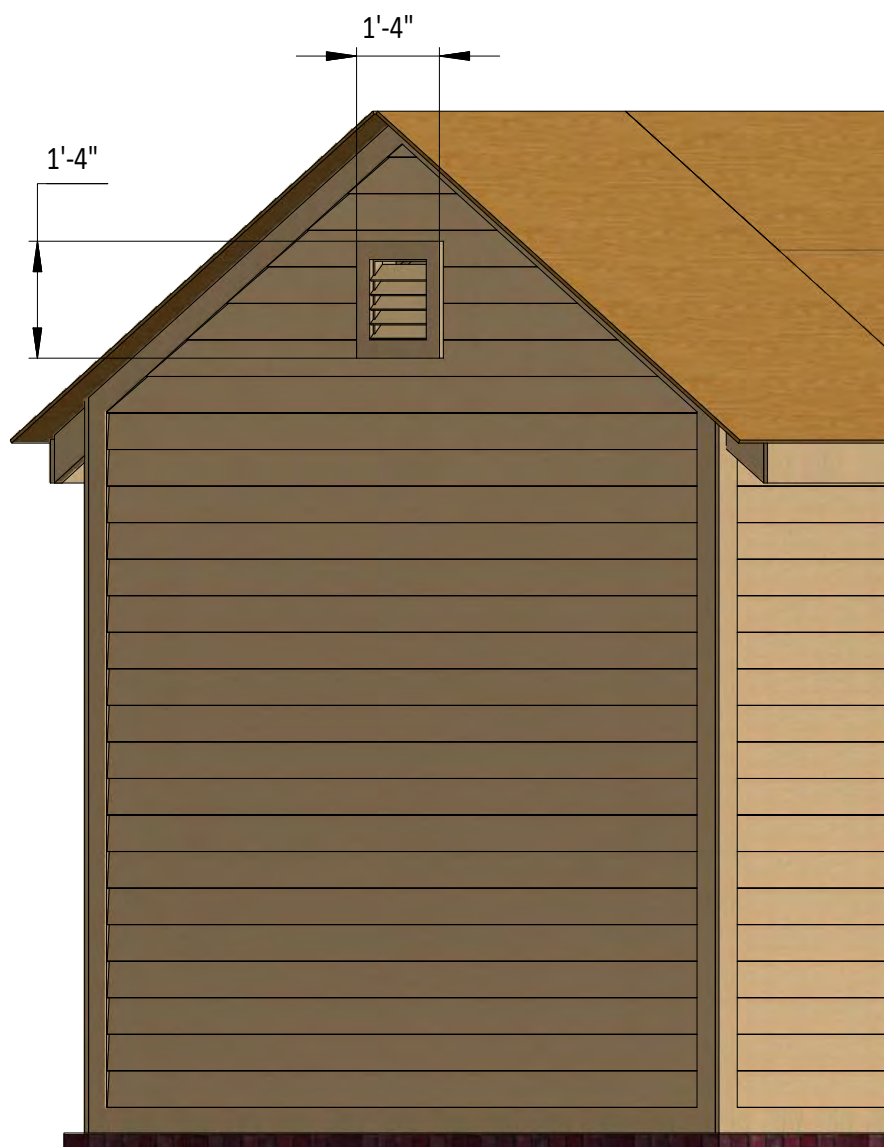


STEP 8

Shed's Back Wall Ventilation

8.1 Install the 12" x 12" wood louver gable vent in the opening of the back wall.

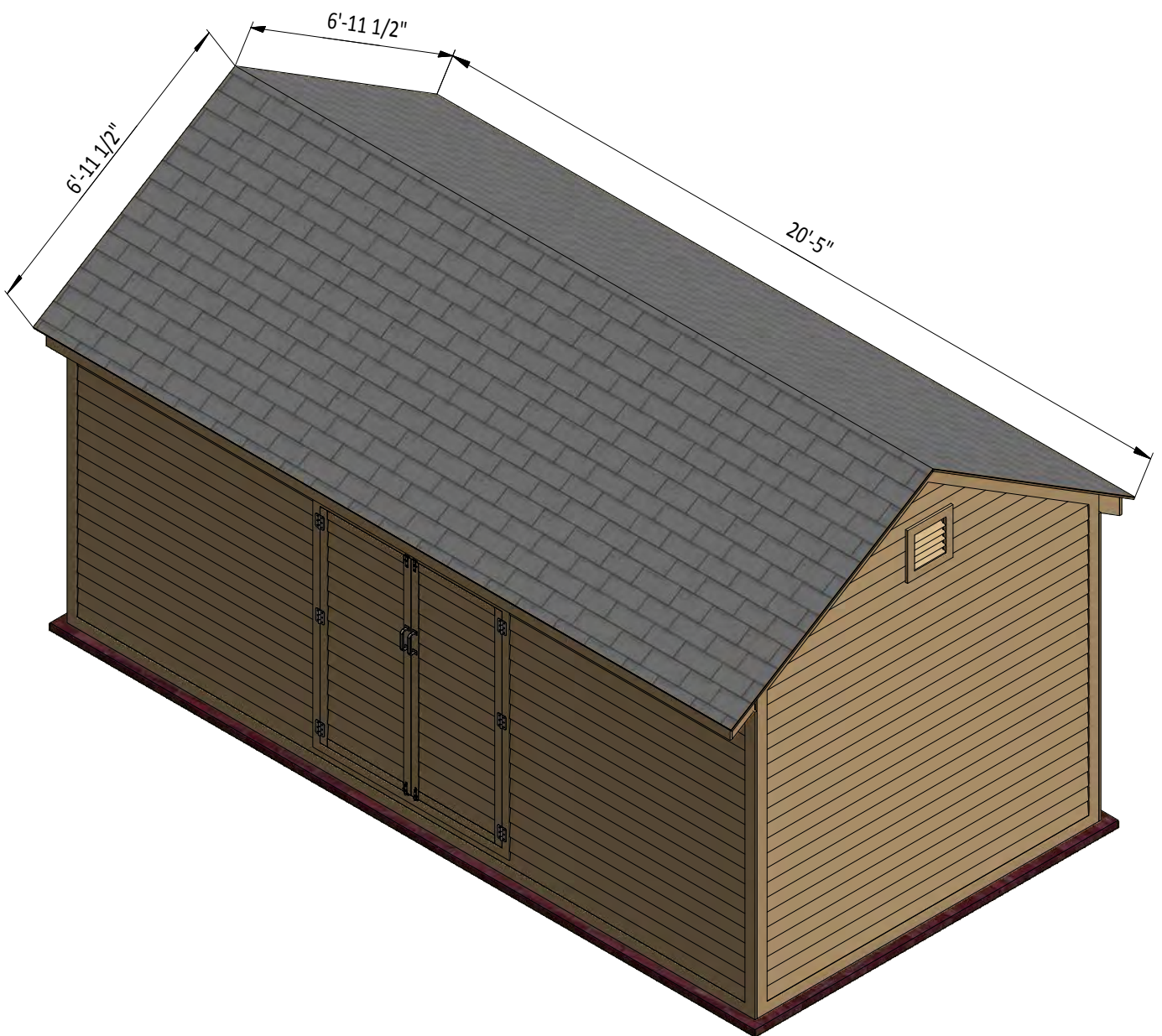
8.2 Secure it with 4x3" Phillips flat head wood screws.



STEP 9

Roof Sheathing Installation

- 9.1 You will need 300 square feet of the asphalt shingle roofing of your choice.
- 9.2 Add the metal drip edge to the fascias.
- 9.3 Cover the plywood with building paper (roofing felt).
- 9.4 Install asphalt shingle roofing using an industrial stapler or roofing nails.



STEP 10

Shed Decoration

Now that your coop is all done, you are ready to decorate it any way you want using your favorite paint, stain, or preservative.



Compare our Free vs. Premium plan

This perfectly designed plan will guide you through the entire process of building your very own shed for any backyard or garden.



Check out the benefits you would get with our **premium edition**:

Features	Free plan	Premium edition
Steps count	10	20
Illustrations for Each Step	✓	✓
Print Ready	✓	✓
Step By Step Instructions	✓	✓
Full Materials and Cuttings List	✗	✓
Additional Illustrations	✗	✓
Additional Blueprints	✗	✓
Tools List	✗	✓
Fastening Elements List	✗	✓
Technical Support	✗	✓

BUY NOW



For more great **HOW-TO** plans please visit: <https://shedplans.org>

Copyright

The text and illustrations that appear here are the exclusive property of shedplans.org and are protected by federal copyright laws. The duplication, sale or distribution of any portion of these plans without prior written consent from the original designer will be subject to the appropriate penalties for copyright infringement. Sharing this plan on the web is only permitted with an indicated original source: <https://shedplans.org>