

# Procedures to clean your 1858 'New Army' Remington Revolver

Regimental Quartermaster, Inc. has prepared these instructions to assist you in the care and maintenance of your black powder Remington. For this purpose, we have used an old brass-frame 1858 Remington Revolver by Pietta which was in dire need of cleaning! **We do not recommend this type of indepth cleaning for an original/antique revolver as it will significantly devalue it.**



You will need the following items to properly clean your revolver:



## Tools:



**Wooden Handle Awl:** Pictured on the bottom is a wooden handled awl; however, modern awls may be used as well. The awl is used for removing caked black powder from the frame, cylinder and other hard to reach areas.

### T-Handle Cone Wrench/Screwdriver:

Made of steel, these cone wrenches/screwdriver are for the removal and installation of the revolver cones. Cones should be removed from the cylinder and cleaned every 3-6 months to prevent them from seizing inside, resulting in a costly replacement.



**Cleaning Rod/Brushes:** The two-piece cleaning rod and brushes are for cleaning out the barrel as well as the chambers of the revolver's cylinder. Recommend you spray the brushes with ballistol prior to chasing it down the barrel. The cotton brush can be cleaned and reused multiple times.

## Tools (continued):



**Revolver Wedge Punch:** Made of Aluminum, this tool is typically used to remove the wedge from a revolver. It is also useful in removing the mainspring from the handle.

**Cone/Nipple Pick:** Made of steel, the long or short pick is used to clear out the cone hole of debris and black powder. As noted to the right, the end may be formed to facilitate cleaning of the bolster's ignition hole into the barrel.



**NEVR-DULL:** Works wonders on all types of metals, a little wadding goes a very long way and will simplify cleaning your revolver.

## **Tools (optional):**



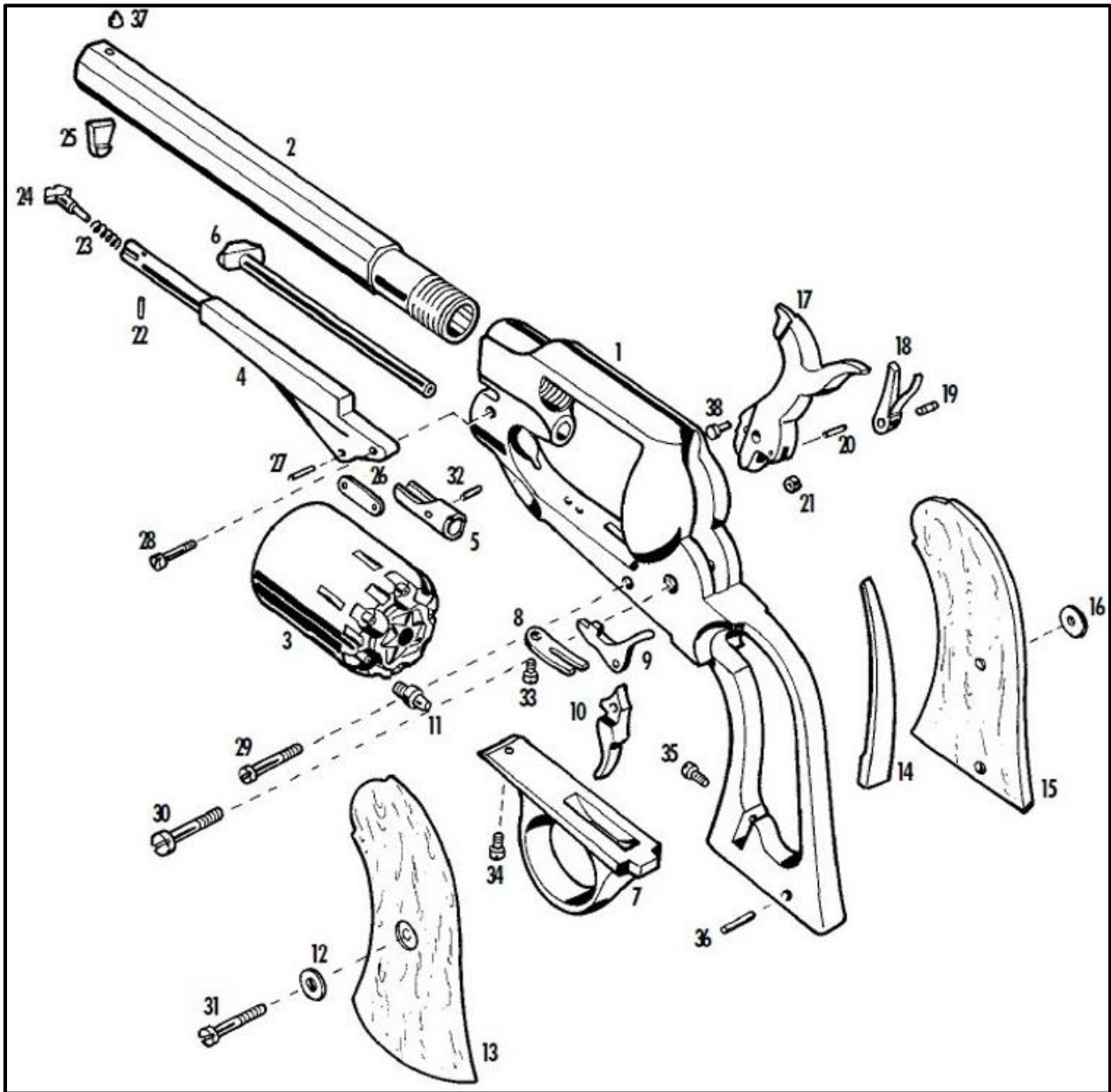
**Steel Wool:** Not for use on blued steel unless you wish to remove the bluing, or brass. Easily removes rust and corrosion from metal, but use sparingly and in conjunction with ballistol.

**Scouring Pads:** Cheap but effective. It is very useful if cut into smaller, more manageable, squares and used on steel. Use with ballistol to remove caked grime, black powder and/or rust. Will remove the bluing off of a blued barrel.



**Dremel Tool:** This versatile tool will allow you to quickly polish brass or grind down metal. Definitely a 'force multiplier' for your tool box. Cord and cordless models are available.

# M1858 Parts List



- |                          |                                |                                 |
|--------------------------|--------------------------------|---------------------------------|
| 1) Frame                 | 14) Mainspring                 | 27) Loading Lever to Link Pin   |
| 2) Barrel                | 15) Right Walnut Grip          | 28) Loading Lever Screw         |
| 3) Cylinder              | 16) Right Threaded Grip Nut    | 29) Trigger Screw               |
| 4) Loading Lever         | 17) Hammer                     | 30) Hammer Screw                |
| 5) Plunger               | 18) Hand Assembly              | 31) Grip Screw                  |
| 6) Cylinder Pin          | 19) Hand Screw                 | 32) Link to Plunger Pin         |
| 7) Triggerguard          | 20) Hammer Roller Pin          | 33) Trigger & Bolt Spring Screw |
| 8) Trigger & Bolt Spring | 21) Hammer Roller              | 34) Front Triggerguard Screw    |
| 9) Cylinder Stop/Bolt    | 22) Loading Lever Latch Pin    | 35) Mainspring Screw            |
| 10) Trigger              | 23) Loading Lever Latch Spring | 36) Grip Pin                    |
| 11) Nipples 6 x 75 mm    | 24) Loading Lever Latch        | 37) Front Post Sight            |
| 12) Left Grip Nut        | 25) Loading Lever Barrel Stud  | 38) Hammer Cam                  |
| 13) Left Walnut Grip     | 26) Loading Lever Link         |                                 |

## Disassembly

Often a revolver receives a quick wipe down after an event but does not receive a complete cleaning. We recommend the owner disassemble the revolver completely and clean it every 3-6 months to keep the black powder from corroding the metal and rust from building up. For this presentation, we are using a brass-frame Confederate M1858 'New Model' Remington Revolver, made by Pietta. Brass frame revolvers require the most care as the soft metal is very susceptible to damage and wear.



### STEP 1: Cylinder

Taking the revolver in your hand, push in the two pins and **(1)** pull the loading lever away from the barrel until it is almost pointing directly away from the revolver. **(2)** Pull the cylinder pin, located above the loading lever, out along the length of the barrel until it stops.



## **STEP 1: Cylinder (continued)**

Pull slightly back on the hammer (3) to free the cylinder and carefully pull it out to one side. You may have to wiggle it free from the frame.

With the cylinder in hand, take your cone wrench and remove the cones from the cylinder. Spray them down with ballistol and remove all traces of black powder/corrosion. Use the barrel brushes to clean out the cylinder chambers and, once complete, reinsert the cones and set the cylinder to the side.



Locate the loading lever screw on the left side of the revolver frame and remove it. Pull the loading lever & plunger assembly free from the frame. Pull the cylinder pin free of the frame and clean both of them and the screw with ballistol. Once wiped down, set them to the side with the cylinder.

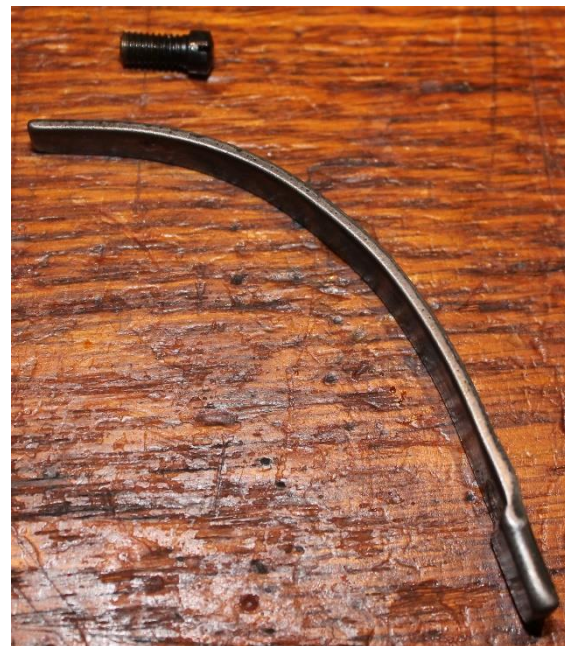


## STEP 2: Grips

Locate the grip screw on the left grip and unscrew it from the handles. Once removed, remove the walnut grips from the revolver. Do not attempt to remove the brass grip nuts as you may damage the wood doing so. Wipe down the grips with linseed oil and set them to the side to dry.



Now that the bare metal of the handle is exposed you may remove the mainspring from the revolver. With the hammer all the way forward (see above), locate the mainspring screw in the handle and remove it. Now slide the mainspring out of the notch at the bottom of the handle. If necessary, use the pistol wedge to facilitate this. Once removed, wipe down the screw and spring with Ballistol and set it aside.





### STEP 3: Triggerguard

Turn the revolver and locate the Triggerguard. Unlike the Colt models, Remingtons have only one screw. Once removed, the triggerguard will hinge outward and separate from the frame. Clean the screw with ballistol and set it aside. Using NEVR-DULL, take a small piece and rub it onto the brass. Pay particular attention to areas that have built up powder or rust. If you wish, you may bring the brass to a high-shine, especially if you use a Dremel tool equipped with a polisher after removing all signs of corrosion.

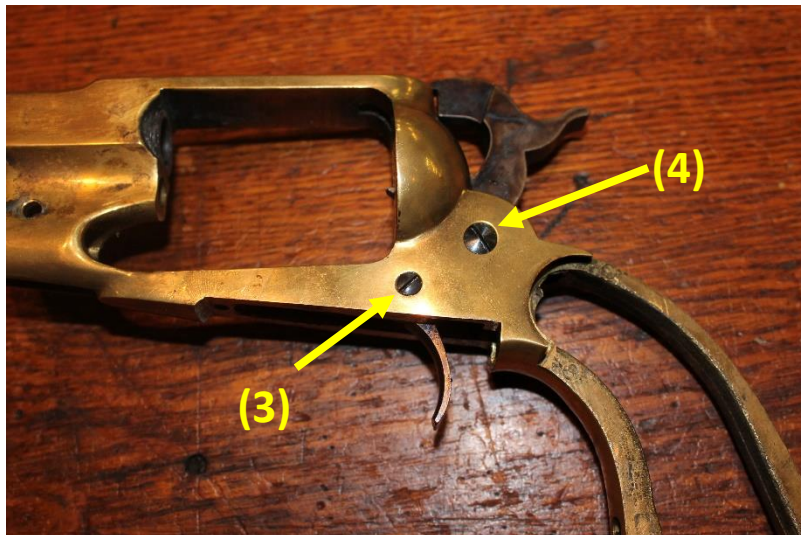


## STEP 4: Mechanics

The frame's triggerguard well holds all of the mechanics for your revolver. With the triggerguard set aside, the first screw to remove is the trigger and bolt spring screw. Apply Ballistol and let it set for five minutes if it is tight. **(1)** Remove the screw and the trigger and bolt spring. Wipe down the trigger & bolt spring and screw and **(2)** set them to the side.



On the left side of the frame you will find the trigger **(3)** and hammer **(4)** screw. The trigger screw holds both the trigger and cylinder stop/bolt in place. Remove the trigger screw and set it to the side. The trigger should slide out from the housing easily. Locate the cylinder stop/bolt and carefully remove it from the trigger guard well. Both should be cleaned off with ballistol, paying special attention to the recesses in both. Set both aside with the screw.



## STEP 5: Mechanics (continued)

With the trigger guard well clear (1), remove the hammer screw from the frame (2). Push gently down on the hammer (3) until it travels through the trigger guard well and exposes the hand assembly and screw. Very carefully unscrew the hand screw, remove it, and then pull the hand assembly downward. Once it has been removed, (4) clean the screws and hand assembly and set them aside. Pull the hammer upwards away from the frame until it too is clear. Clean/wipe down the hammer along with the holes and set the hammer aside. The revolver is now ready for its body to be cleaned.



## STEP 6: Frame

**For brass frame revolvers** we recommend using NEVR-DULL and a Dremel Tool to bring it to the high shine shown below. Time and patience is required, especially if the brass is scoured with black powder corrosion.

**For bright steel revolvers** we recommend using NEVR-DULL, Ballistol and cotton patches to remove the corrosion and rust. A Dremel tool with polishing wheel will bring the steel to a high shine.

**For blued steel revolvers** we recommend using Ballistol and cotton patches to remove surface rust and corrosion. We do not recommend a Dremel tool or NEVR-DULL as it may remove the bluing from the frame.



## Reassembly

### STEP 7: Mechanics

With the frame in hand, locate the hammer and **(1)** slide the hammer into the frame, pushing it through the triggerguard well until the bottom is exposed underneath the frame. Insert the hand assembly **(2)** and slide it into the hand assembly channel in the trigger guard. Line up the holes and **(3)** screw in the hand screw into the hammer. Once finished, pull the hammer upwards back through the well and **(4)** line up the holes of the frame and the hammer. Insert the hammer screw and screw it in until it is tight, do NOT overtighten any screws as it will only cause additional problems the next time you disassemble your revolver.



## STEP 7: Mechanics (continued)

Turn the revolver until **(1)** you are looking directly into the triggerguard well. Locate the cylinder stop/bolt and place it into the well on the left side **(2)** so that it is flat against the hammer and side of the frame. Insert the trigger on the right side while lining up the hole with both the trigger and hand cylinder stop/bolt. Push the trigger screw through and tighten.

At this point, test your progress by pulling back on the hammer. It should click at safe and then again at fire. Pull on the trigger and push the hammer back forward.

Turn the revolver and place the trigger and bolt spring on top of the assembly, lining up the hole with that in the frame **(3)**. Screw the hand and bolt spring screw in until tight.



## STEP 8: Mainspring and Functions Check



With the hammer fully forward, insert the mainspring into the handle and slide the end into the mainspring channel (as shown to the left). This may take some finesse and strength, as the mainspring will be in tension. Once the mainspring is in position, screw in the mainspring screw.

At this point, it is best to conduct a functions check of your revolver to ensure the mechanics inside the frame are functioning correctly. This will also save wear and tear on your screw heads and revolver parts.

**(1)** With the hammer in the 'down' position,

**(2)** pull the hammer back slowly and the trigger should 'click' into 'safe'. If you pull on the trigger the hammer should not fall.

**(3)** Pull the hammer all the way back into the 'fire' position. Pull the trigger and the hammer will fall. Your revolver's mechanics are correct and you may proceed with the reassembly.



## STEP 9: Triggerguard



Take the triggerguard and slide the trigger through the guard. Push the rear of the triggerguard into the notch in the frame and push up on the front of the guard. Line up the hole and screw the triggerguard screw into the frame.

## STEP 10: Grips

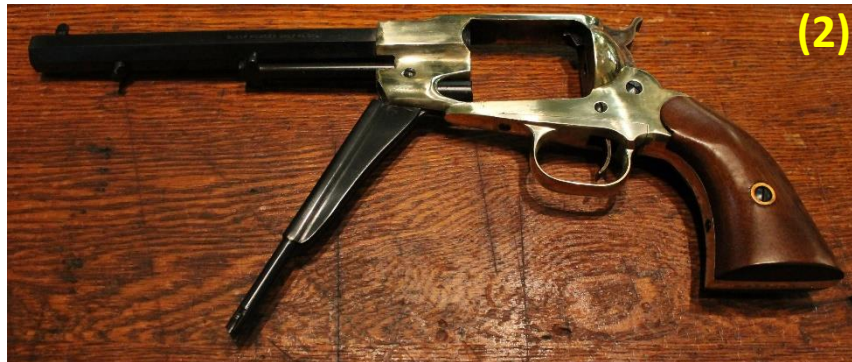
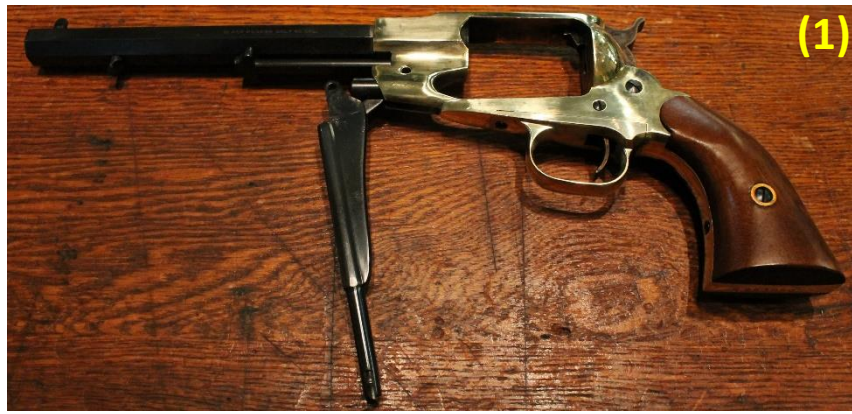


If there are any traces of linseed oil on the grips then wipe them down before placing them on either side of the handle. Insert the grip screw and tighten.



## **STEP 11: Cylinder**

Take the cylinder pin, with the flat part of the cylinder pin away from the barrel, and **(1)** insert it partway into the frame. Insert the plunger of the loading lever assembly into the frame, lining up the holes. **(2)** Insert the loading lever screw into the left side of the revolver frame and tighten. Holding the revolver in one hand, take the cylinder in the other. Pull slightly back on the hammer and insert the cylinder into the frame. Once the cylinder is in the frame, let the hammer back forward and push on the cylinder pin until it secures the cylinder. If the cylinder pin does not slide you will have to make slight adjustments to the cylinder until it seats properly. **(3)** Once the cylinder pin is seated, rotate the loading lever up until it is fastened in place. Your revolver is now ready for your next event.



**For further information or questions please contact us at:**

**Regimental Quartermaster, Inc.**

49 Steinwehr Avenue

Gettysburg, PA 17325

(717) 338-1864 (Store)

(717) 338-1850 (Mail Order)

[regtqm@aol.com](mailto:regtqm@aol.com) (email)

[www.regtqm.com](http://www.regtqm.com)