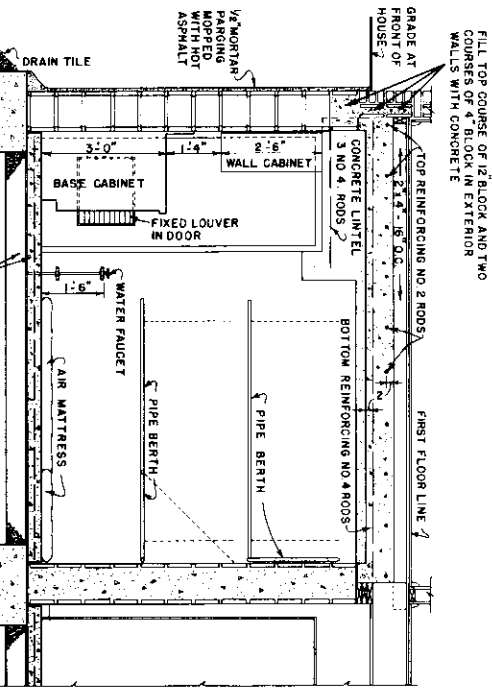


PLAN OF CEILING SLAB
SHOWING REINFORCING



SECTION A-A

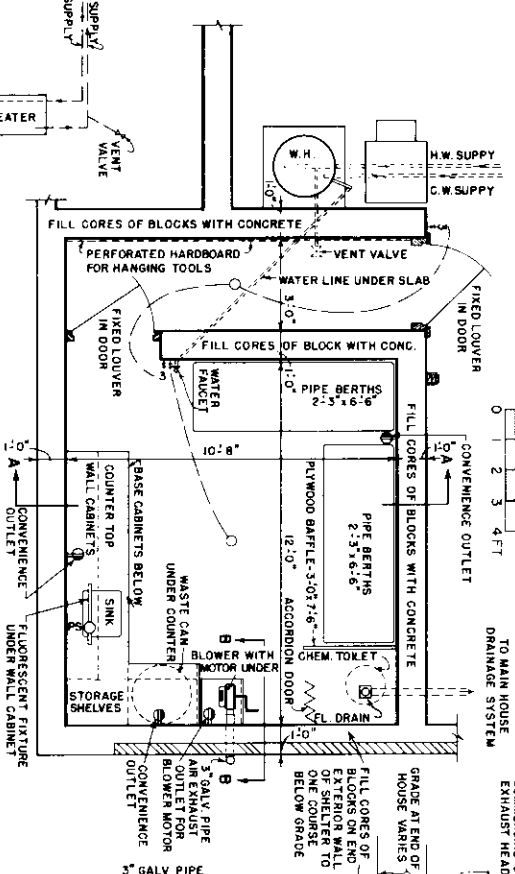
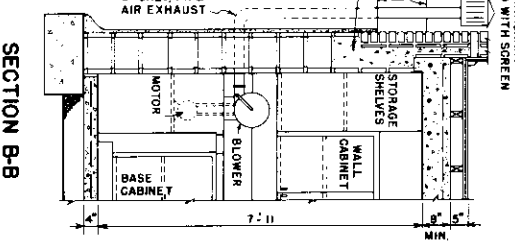
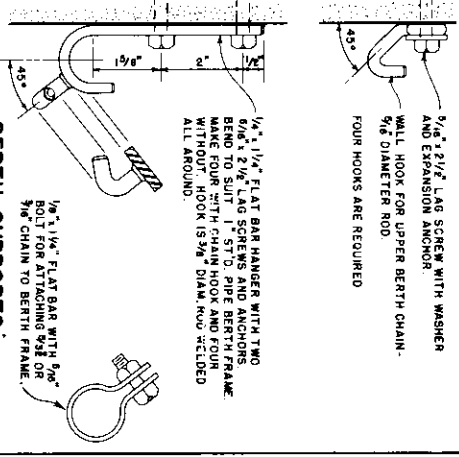


DIAGRAM SHOWING WATER
SUPPLY FOR SHELTER
(IF ELECTRIC CURRENT FAILS)

PLAN



SECTION B-B



BERTH-SUPPORTS

NOTES -
THIS SHELTER IS DESIGNED SPECIFICALLY FOR CONSTRUCTION WHEN HOUSES ARE NOT AVAILABLE. IT IS INTENDED TO BE USED AS A TEMPORARY SHELTER FOR THE PROTECTION OF PERSONS AND PROPERTY FROM THE EFFECTS OF SEVERE WEATHER AND TO BE PROVIDED WITH HOT AND COLD WATER AND DRAIN ON MAIN HOUSE LINES FOR USE WHILE ELECTRICITY IS AVAILABLE. STANDARD PIPE FOLDING PIPE BERTHS ARE RECOMMENDED. USE OF 1" STANDARD PIPE WITH CLOSE NIPPLE AND COUPLING FOR ASSEMBLY - COVER WITH 1/2" x 1" WELDED WIRE FRAMING WITH TRANSVERSE WIRES SPACED 12" ON CENTER. THESE BERTHS MAY BE CONSTRUCTED AS FLAT WOOD STORAGE SHELVES.

COOPERATIVE EXTENSION WORK IN
AGRICULTURE AND HOME ECONOMICS
DEPARTMENT OF AGRICULTURAL ENGINEERING
UNIVERSITY OF MARYLAND
PATERSON, MARYLAND
AND AGRICULTURE COOPERATING
UNIT OF THE UNITED STATES DEPARTMENT OF AGRICULTURE
FALLOUT SHELTER
FOR SIX PEOPLE
USDA 1963 EX. 7166 SHEET 1 OF 1