

UTAH SHELTER SYSTEMS Inc.

Salt Lake City, Utah

AND

ANDAIR AG

Andelfingen, Switzerland

DOORS & ACCESSORIES

"The Strongest and Best Designed Shelter Hatches to be Found in the Marketplace"

USS Inc. Blast Door

[Features](#)
[Front & Side Views](#)
[Accessories](#)

ANDAIR (LUWA) Armored Door

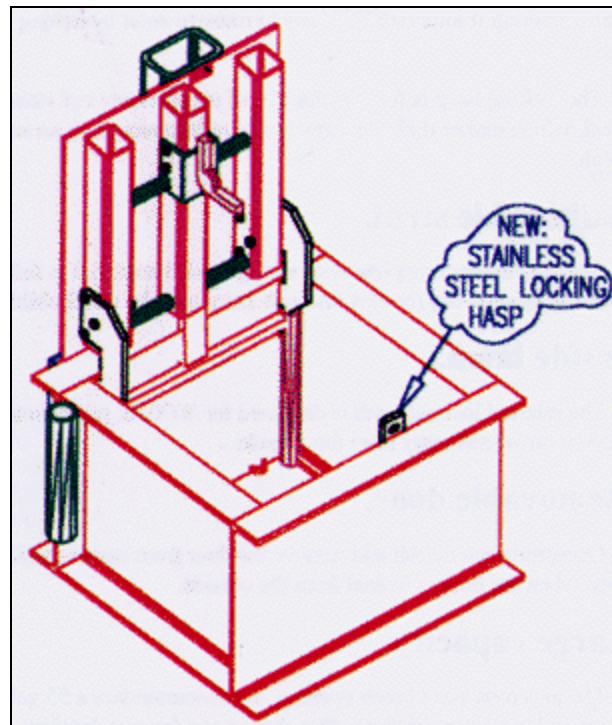
[Self Rescue Device](#)

ANDAIR Blast Valves

[Inlet Blast Valve 1 bar](#)
[Exhaust Blast Valve 1 bar](#)
[Inlet Blast Valve 3 bar](#)
[Exhaust Blast Valve 3 bar](#)

USS Inc. -Blast Door

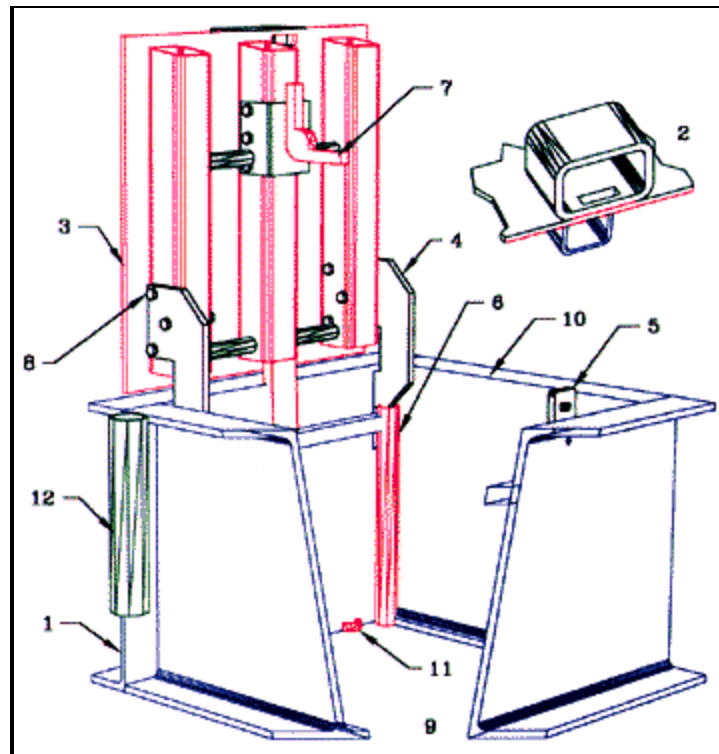
This blast door has been designed to fit a 30" to 48" diameter steel entrance tunnel. The door has a 31 in. square entrance.



We recommend horizontal (flat) installation of this door. A different lifting mechanism would need to be retrofitted for steeper angled installations. Angled installations significantly diminish the blast capability of doors and shelters.

The door opens with little effort.

Blast Door Features



Overall hatch strength

1. The hatch body is constructed of fully welded I-beams, resulting in the strongest, most secure hatch door that can be manufactured for home use.

2. The door lock location has a full 7/8" thick steel wall. Almost triple that of any other hatch.

3. The steel membrane door is constructed of 3/8 inch steel plate.

Fully concealed construction

4. The hinges are fully concealed and constructed inside the hatch frame making it impossible for any intruder to enter by cutting the hinges.

5. The locking hasp is fully enclosed and is removable from the inside.

Adjustable strut

6. The door comes complete with shock dampened spring loaded strut, allowing for easy and safe entry.

Inside latch

Removable locking hasp

8. The steel membrane door is reinforced with 3 inch square steel tubing for added strength with a minimum 150 psi rating.

Large Capacity

9. The generous sized hatch 31 inch square opening can accommodate a 55 gallon drum.

Ladder Connection

11. The ladder is designed to be welded to the under side of the door skirt.

12. A winch base is included to allow for the adaptation of an optional winch accessory, to lower light weight items (up to 250 lbs) into and out of the shelter.

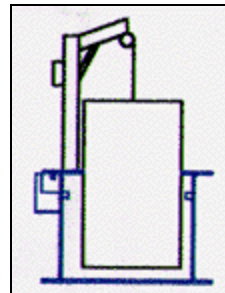
7. The internal locking latch is designed for 5000 lb. pressure to insure against unwanted entry from the outside. It also resists the negative pressure phase of a nuclear explosion passing over the hatch.

Accessories

WINCH

Lowers objects
into and out of the
shelter

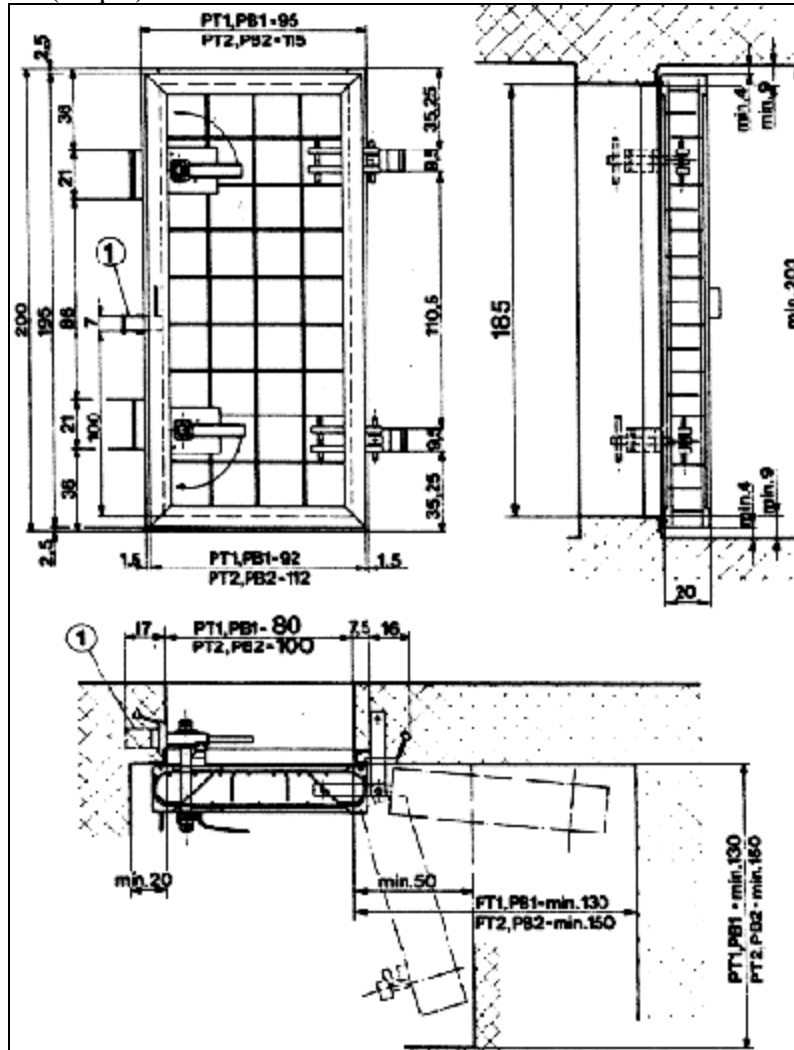
(250 lb. capacity)



ANDAIR AG (LUWA)-Armored Door

The PT series exterior armored doors are vertical hanging doors designed for concrete shelters. **They have been designed and tested** by Andair AG in Andelfingen, Switzerland according to the directives of the Swiss Federal Office of Civil Defense. They are rated at apx. 1

bar (15 psi).



The PT1 is 80 cm. by 185 cm. and the weight without the concrete filler is 200 kg. It has outside mounting with a fixed door sill. Hinges can be on either the LH or RH side. It consists of a steel frame to cast made of angle-profile with anchor plates.

Larger sized exterior and interior doors are available upon request.

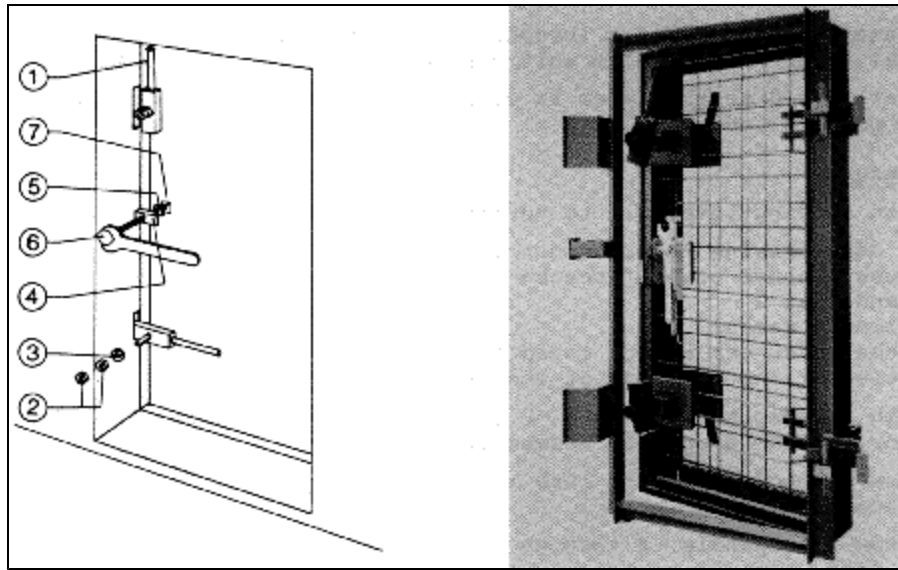
PT2.....100 X 185 cm.

PT3.....140 X 220 cm.

PT4.... 60 X 120 cm.

PTO double door.....240 X 210 X 20 cm. thick.

Self Rescue Device



Mounting Instructions:

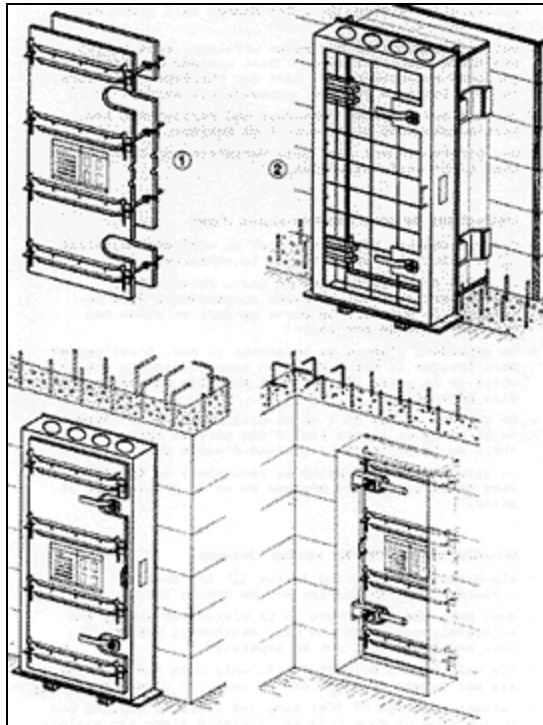
-Use shuttering boards or a standardized shuttering device (1).

-Door body and frame must be placed vertically and accurately wedged to the wall shuttering boards (2).

-The wall and frame must be cast first. The door is cast in a closed position after the concrete in the wall has set (apx. 30 days).
Quality of concrete to be (300 kg / cm²)

-A minimum clearance of 4 cm. is required between top edge of door body and finished ceiling, and bottom edge of door body and finished floor.

-The rubber seal must not be removed while casting and painting.



© UTAH SHELTER SYSTEMS